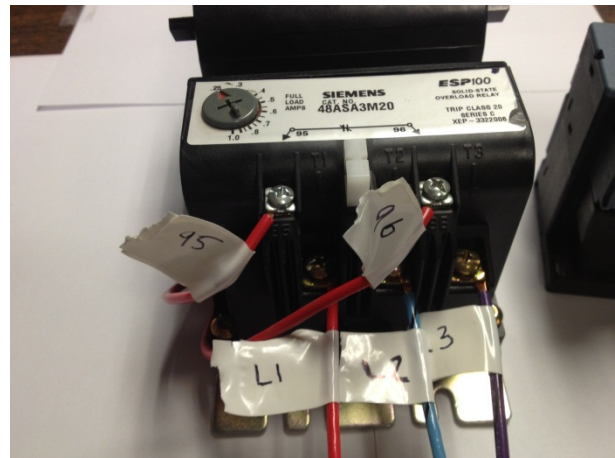


How to replace ESP100 with ESP200



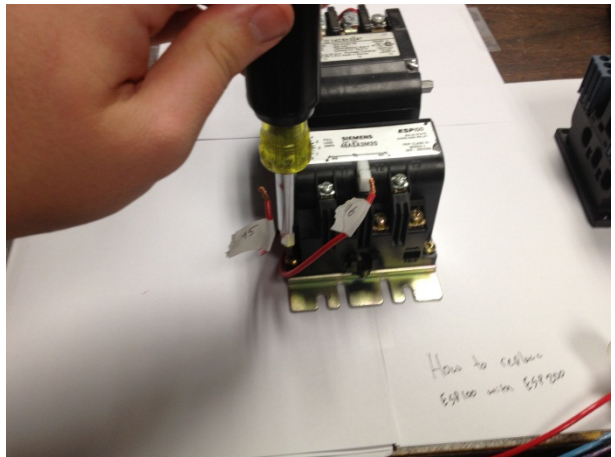
1. Label your wires.



2. Remove the interlock wires (95 and 96) and load wires (T1, T2, and T3).



3. Remove the two bronze screws holding the ESP100 to the back plate.



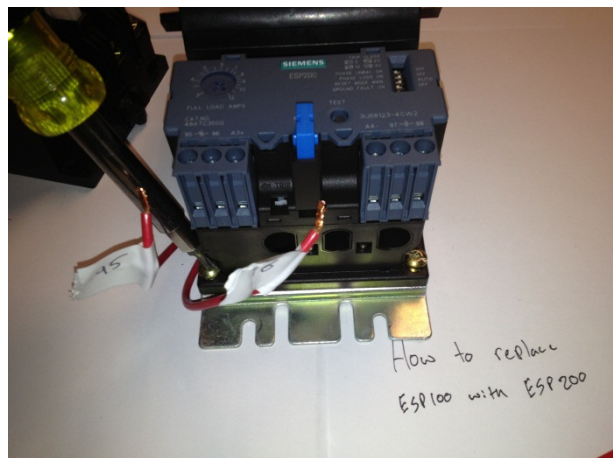
4. Loosen the load screws on the contactor and slide the ESP100 off.



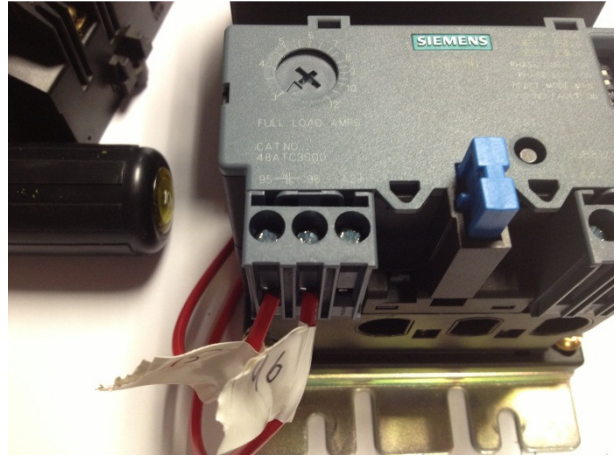
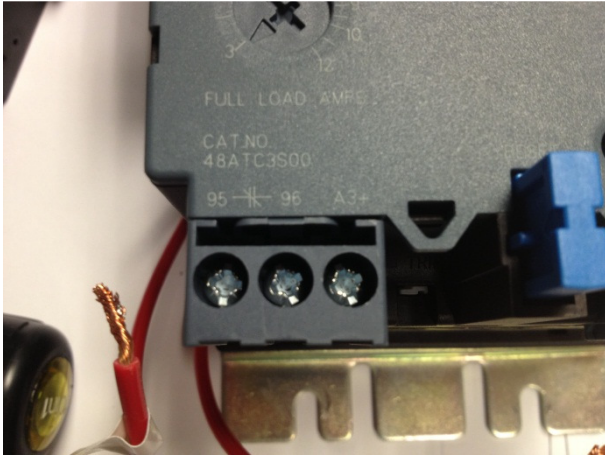
5. Remove the old ESP100 overload and place the new ESP200 overload on the back board.



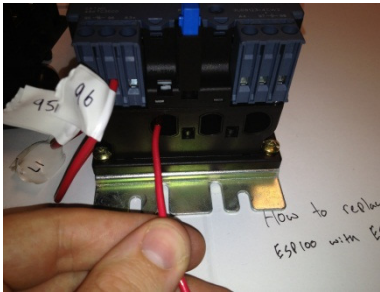
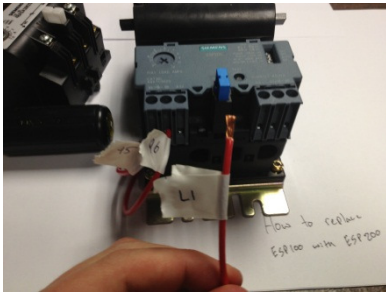
6. Line up the ESP200 with the holes for the bronze screws that were used with the ESP100, anchor the ESP200 with the bronze screws.



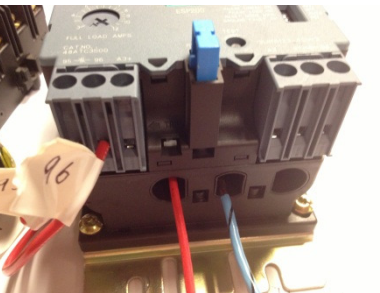
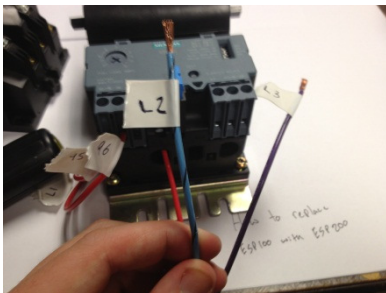
7. Terminate the red interlock wires (95 and 96) to terminals 95 and 96 on the ESP200.



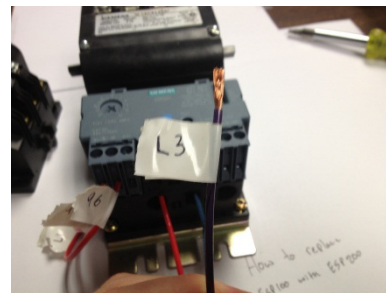
8. Remove the label and feed the load wire (L1) through the left hole in the ESP200. Terminate this wire onto the T1 terminal on the contactor.



9. Remove the label and feed the load wire (L2) through the middle hole in the ESP200. Terminate this wire onto the T2 terminal on the contactor.



10. Remove the label and feed the load wire (L3) through the right hole in the ESP200. Terminate this wire onto the T3 terminal on the contactor.



11. Remove your labels from your interlock wires and you have successfully replaced a ESP100 with a ESP200.

